

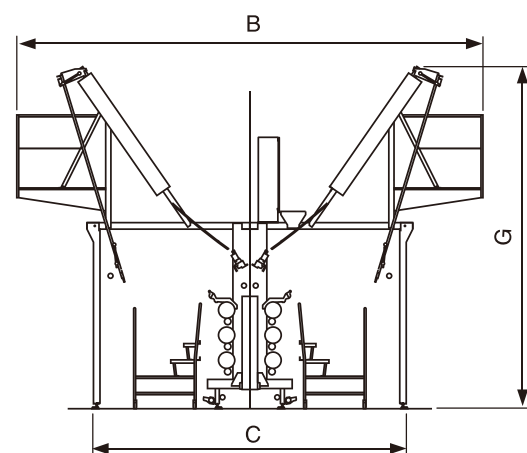
eFK

Technical data

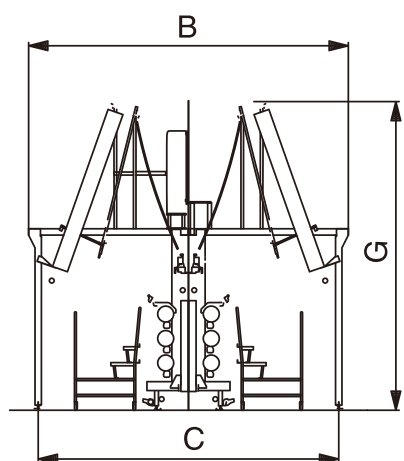
Dimensions

eFK double heater

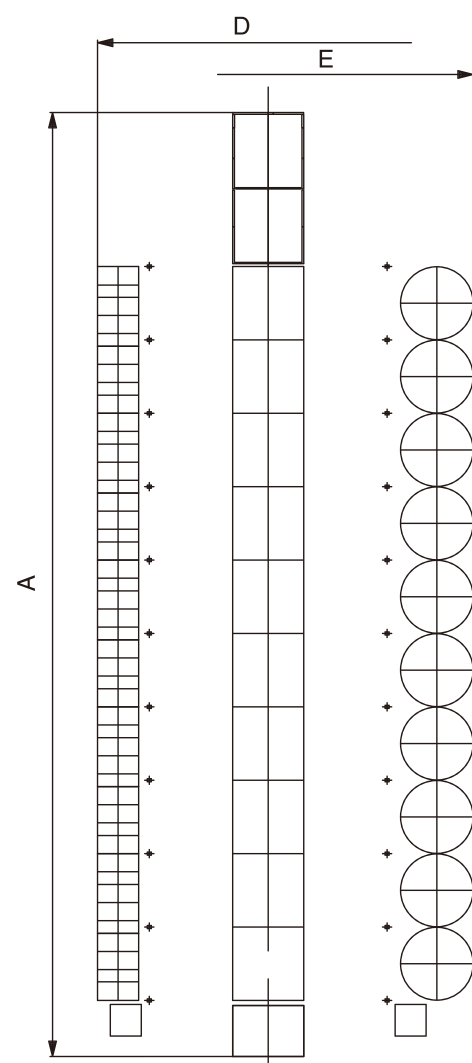
eFK V cross section



eFK M cross section



Site Plan



Technical data eFK double heater

| | | CoolFlex | Standard | vFlex | HTI | Coarse |
|---|---------|------------|------------|------------|------------|-----------------------|
| Machine product range | den | 20-150 | 30-300 | 30-300 | 30-300 | 30-600 ⁽²⁾ |
| preferred operational range | den | 20-100 | 30-200 | 30-300 | 75-300 | 150-300+ |
| Basic Machine Configuration | | | | | | |
| Number of sections | up to | 12 | 12 | 12 | 12 | 12 |
| texturing positions per section | up to | 24 | 24 | 24 | 24 | 24 |
| texturing positions per machine | | 288 | 288 | 288 | 288 | 288 |
| take up positions per machine | | 288 | 288 | 288 | 288 | 288 |
| mechanical speed potential | m/min | 1200 | 1200 | 1200 | 1200 | 1200 |
| cross section | | V | V | V | V | M |
| Heating and cooling system | | | | | | |
| primary heater | | Dowtherm | Dowtherm | HTI | HTI | Dowtherm |
| length | m | 1.5 | 2.0 | 1.0 | 1.0 | 2.5 |
| cooling type | | Tube | Rail | Tube | Rail | Rail |
| cooling length | m | 0.80 | 1.10 | 1.20 | 1.75 | 2.10 |
| secondary heater | | Dowtherm | Dowtherm | Dowtherm | Dowtherm | Dowtherm |
| length | m | 1.46 | 1.46 | 1.46 | 1.46 | 1.46 |
| Feed system | | | | | | |
| godet | G > | 1/1.x/2/2x | 1/1.x/2/2x | 1/1.x/2/2x | 1/1.x/2/2x | 1/1.x/2/2x |
| shaft | W > | 1/1.x/2/2x | 1/1.x/2/2x | 1/1.x/2/2x | 1/1.x/2/2x | 1/1.x/2/2x |
| feed before take up | | W3 | W3 | W3 | W3 | W3 |
| Take up system | | | | | | |
| max package stroke | mm | 250 | 250 | 250 | 250 | 250 |
| max package diameter | Ø mm | 250 | 250 | 250 | 250 | 250 |
| take up | concept | Camshaft | Camshaft | Camshaft | Camshaft | Camshaft |
| nominal taper angle | ° | 65°- 85° | 65°- 85° | 65°- 85° | 65°- 85° | 65°- 85° |
| double strokes | | ≤ 600 | ≤ 600 | ≤ 600 | ≤ 600 | ≤ 600 |
| take up concept | concept | ATT | ATT | ATT | ATT | ATT |
| nominal taper angle | ° | 67°- 90° | 67°- 90° | 67°- 90° | 67°- 90° | 67°- 90° |
| double strokes | | ≤ 750 | ≤ 750 | ≤ 750 | ≤ 750 | ≤ 750 |
| Power data | | | | | | |
| power connection | V | 380 [400] | 380 [400] | 380 [400] | 380 [400] | 380 [400] |
| frequency | Hz | 50 [60] | 50 [60] | 50 [60] | 50 [60] | 50 [60] |
| | | 220 VAC | 220 VAC | 220 VAC | 220 VAC | 220 VAC |
| control voltage | V | 24 VDC | 24 VDC | 24 VDC | 24 VDC | 24 VDC |
| Dimensions | | | | | | |
| length overall (A) ⁽¹⁾ | mm | 21446 | 21446 | 21446 | 21446 | 21446 |
| width overall top of machine (B) | mm | 6192 | 7160 | 7160 | 7162 | 4764 |
| width overall bottom of machine (C) | mm | 4680 | 4764 | 4816 | 4764 | 4764 |
| width overall with stationary creel (D) | mm | 6564 | 6724 | 6724 | 6724 | 6724 |
| width overall with rotary creel (E) | mm | 7914 | 8074 | 8074 | 8074 | 8074 |
| height max. (incl. feed 2x) (G) | mm | 5016 | 5710 | 5094 | 5468 | 5337 |
| height min. (without feed 2x) (G) | mm | 4671 | 5365 | 4749 | 5123 | 4992 |

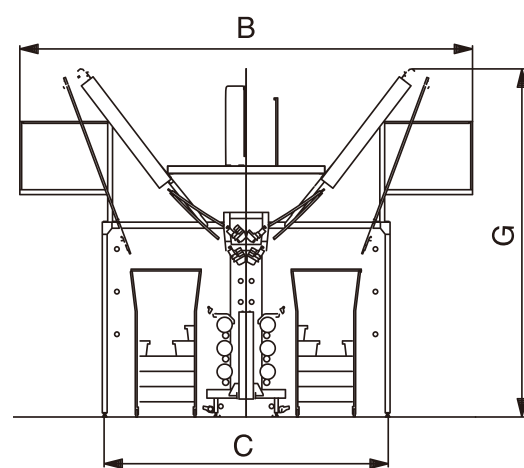
(1) considering 12 take up sections each take up section 1440 mm

(2) for coarse denier greater 450 den only with type8E and limitation of mechanical speed to 860 m/min

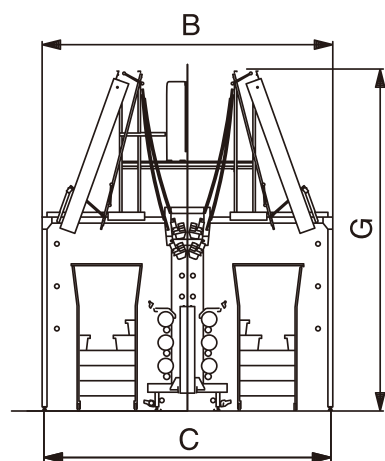
Dimensions

eFK Multispindle

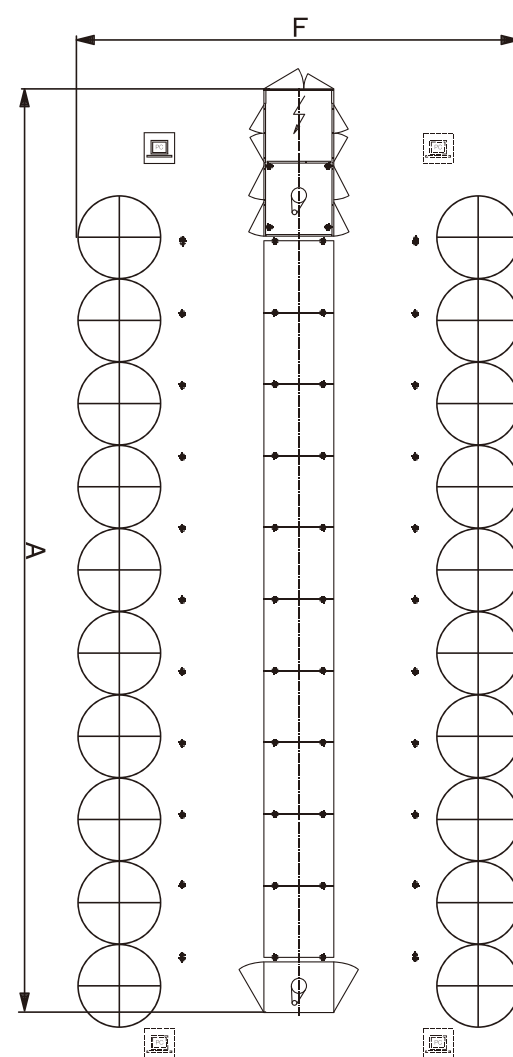
V cross section



M cross section



Site Plan



Technical data eFK Multispindle double heater

| | | Standard | Coarse |
|-------------------------------------|---------|-------------------|-----------------------|
| Machine product range | den | 30-300 | 30-600 ⁽²⁾ |
| preferred operational range | den | 30-200 | 150-300+ |
| Basic Machine Configuration | | | |
| Number of sections | up to | 10 | 10 |
| texturing positions per section | up to | 24 | 24 |
| texturing positions per machine | | 480 | 480 |
| take up positions per machine | | 240 | 240 |
| mechanical speed potential | m/min | 1200 | 1200 |
| cross section | | V | M |
| Heating and cooling system | | | |
| primary heater | | Dowtherm | Dowtherm |
| length | m | 2.0 | 2.5 |
| cooling type | | Rail | Rail |
| cooling length | m | 1.10 | 2.10 |
| secondary heater | | Dowtherm | Dowtherm |
| length | m | 1.46 | 1.46 |
| Feed system | | | |
| godet | G > | 1/1.x/2/2x | 1/1.x/2/2x |
| shaft | W > | 1/1.x/2/2x | 1/1.x/2/2x |
| feed before take up | | W3 | W3 |
| Take up system | | | |
| max package stroke | mm | 250 | 250 |
| max package diameter | Ø mm | 250 | 250 |
| take up | concept | Camshaft | Camshaft |
| nominal taper angle | ° | 65° - 85° | 65° - 85° |
| double strokes | | ≤ 600 | ≤ 600 |
| Power data | | | |
| power connection | V | 380 [400] | 380 [400] |
| frequency | Hz | 50 [60] | 50 [60] |
| control voltage | V | 220 VAC 24 VDC | 220 VAC 24 VDC |
| Dimensions | | | |
| length overall (A) ⁽¹⁾ | mm | 18566 | 18566 |
| width overall top of machine (B) | mm | 7494 | 4764 |
| width overall bottom of machine (C) | mm | 4764 | 4764 |
| width overall with JUMBO creel (F) | mm | 8880 | 8880 |
| height max. (incl. feed 2x) (G) | mm | 5720 | 5645 |

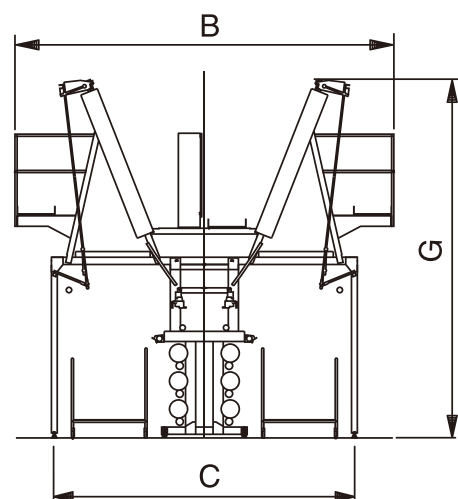
(1) considering 10 take up sections each take up section 1440 mm

(2) for coarse denier greater 450 den limitation of mechanical speed to 860 m/min

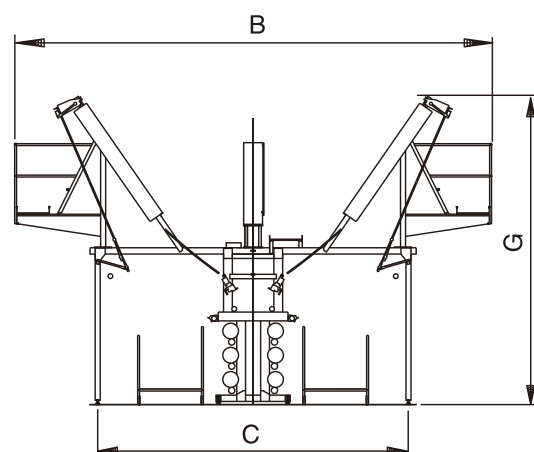
Dimensions

eFK single heater

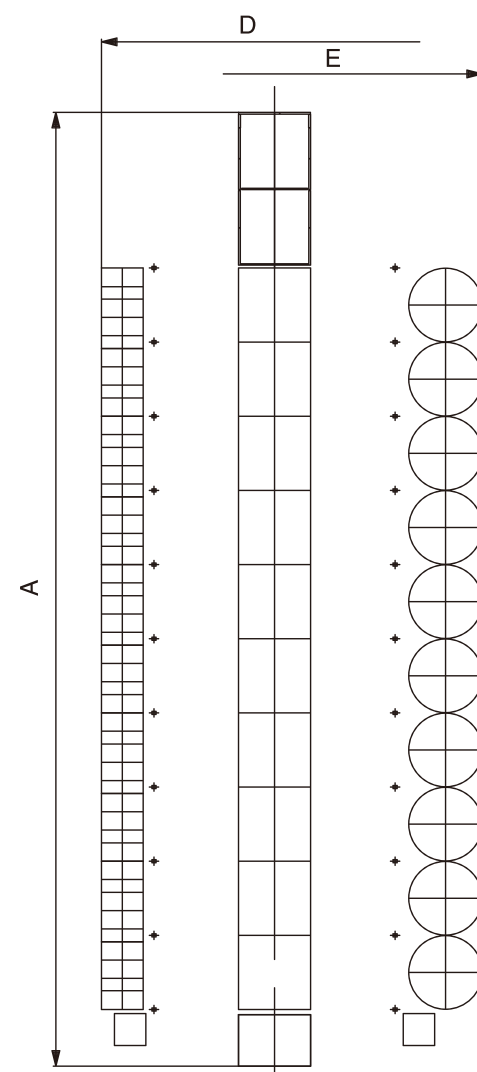
S cross section



V cross section



Site Plan



Technical data eFK single heater

| | | Fine | Standard |
|--|---------|------------|------------|
| Machine product range | den | 20-150 | 30-300 |
| preferred operational range | den | 20-70 | 30-200 |
| Basic Machine Configuration | | | |
| Number of sections | up to | 10 | 10 |
| texturing positions per section | up to | 24 | 24 |
| texturing positions per machine | | 240 | 240 |
| take up positions per machine | | 240 | 240 |
| mechanical speed potential | m/min | 1200 | 1200 |
| cross section | | S | V |
| Heating and cooling system | | | |
| primary heater | | Dowtherm | Dowtherm |
| length | m | 2.0 | 2.0 |
| cooling type | | Rail | Rail |
| cooling length | m | 0.70 | 1.10 |
| Feed system | | | |
| godet | G > | 1/1.x/2/2x | 1/1.x/2/2x |
| shaft | W > | 1/1.x/2/2x | 1/1.x/2/2x |
| Take up system | | | |
| max package stroke | mm | 250 | 250 |
| max package diameter | Ø mm | 250 | 250 |
| take up | concept | Camshaft | Camshaft |
| nominal taper angle | ° | 65°- 85° | 65°- 85° |
| double strokes | | ≤ 600 | ≤ 600 |
| Power data | | | |
| power connection | V | 380 [400] | 380 [400] |
| frequency | Hz | 50 [60] | 50 [60] |
| | | 220 VAC | 220 VAC |
| control voltage | V | 24 VDC | 24 VDC |
| Dimensions | | | |
| length overall (A) ⁽¹⁾ | mm | 18566 | 18566 |
| width overall top of machine (B) | mm | 5226 | 7580 |
| width overall bottom of machine (C) | mm | 4220 | 5020 |
| width overall with stationary creel (D) | mm | 6180 | 6980 |
| width overall with rotary creel (E) | mm | 7530 | 8330 |
| height max. (incl. feed 2x) (G) | mm | 5343 | 5241 |
| height min. (without feed 2x) (G) ⁽²⁾ | mm | 4999 | 4896 |

(1) considering 10 take up sections each take up section 1440 mm

(2) elimination of feed 2x only possible in combination with shaft feed system

Oerlikon Barmag

Zweigniederlassung der
Oerlikon Textile GmbH & Co. KG
Leverkuser Strasse 65
P.O. Box 11 02 40
42862 Remscheid
GERMANY
Phone +49 2191 67-0
Fax +49 2191 67-1204
info.barmag@oerlikon.com

欧瑞康（中国）科技有限公司

Oerlikon (China) Technology Co., Ltd.
No.9 Chang Yang Street
Suzhou Industrial Park
Jiangsu, 215024, P. R. China
Phone +86 512 8188 5901
Fax +86 512 8188 5988
dty.info.barmag@oerlikon.com
dty.service.barmag@oerlikon.com

**The information supplied in this
brochure is for guidance only.
We reserve the right to modify it
at any time.**

TD-EFK 10 / 03-01
03.10 / yaean design ltd.
Subject to changes