

E-Fill 2778

80 % Nickel Coated Aluminum 80Ni / Al20

Oerlikon Metco's E-Fill™ 2778 is for special conductive filler applications that require an alternative composition to conventional nickel coated graphite products.

In addition to its unique composition, E-Fill 2778 features particles with a rounded shape and a thick nickel cladding that fully encapsulates the aluminum core.

Screen Analysis

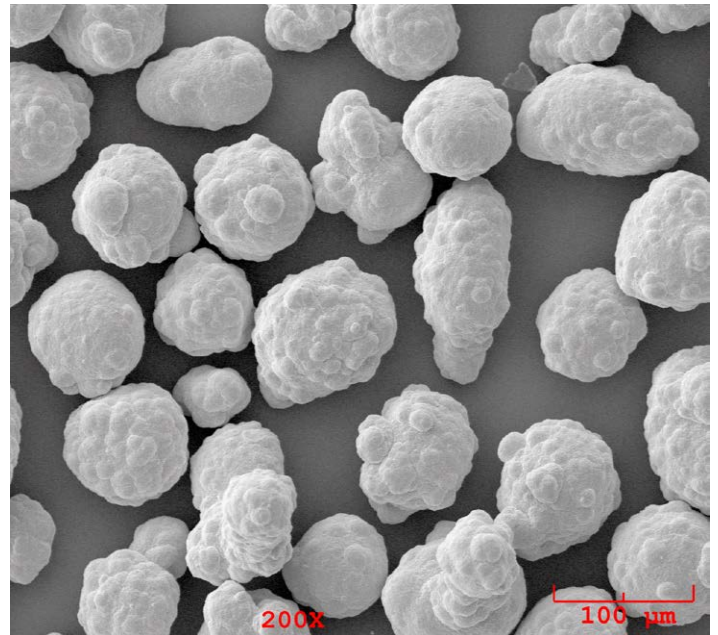
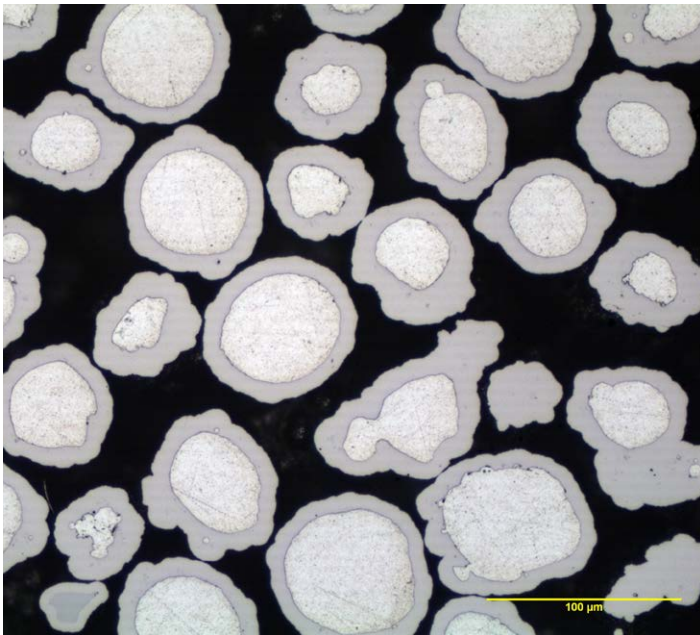
Tyler Mesh Size	Typical Value % by Mass
+170	3
-170/+270	balance
-270	3

Microtrac

	Typical Value Microns (µm)
D10	60
D50	80
D90	120

Additional Information

True Particle Density	6.2 g/cm ³ typical
Apparent Density Hall (ASTM B212)	3.0 g/cm ³ typical
Standard Packaging	25 kg net in plastic pails
Order No.	1096452
Safety Data Sheet (SDS)	50-999



E-Fill 2778. Left: cross-section of powder particles. Right: morphology of powder particles.

Information is subject to change without prior notice.